

CPS 10505/1 - Map M

118°10'37"E

118°10'41"E

31°0'14"S

31°0'14"S

31°0'18"S

31°0'18"S

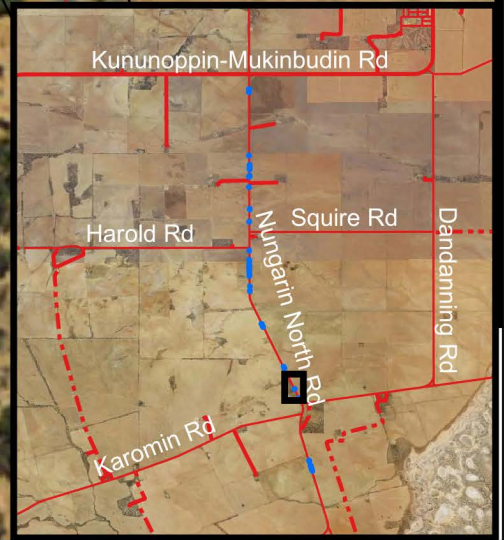
31°0'22"S

31°0'22"S

LOT 5 ON PLAN 23352

LOT 2 ON DIAGRAM 52656


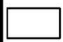


Nungarin North Rd
Road

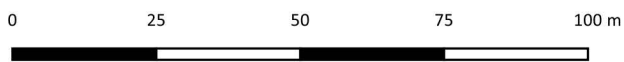


118°10'37"E

118°10'41"E

Legend

-  CPS areas applied to clear
-  Land Tenure (LGATE_226) - SLIP
-  Local Government Authorities
-  Minor



1:1,000

Projection: GDA2020



GOVERNMENT OF
WESTERN AUSTRALIA